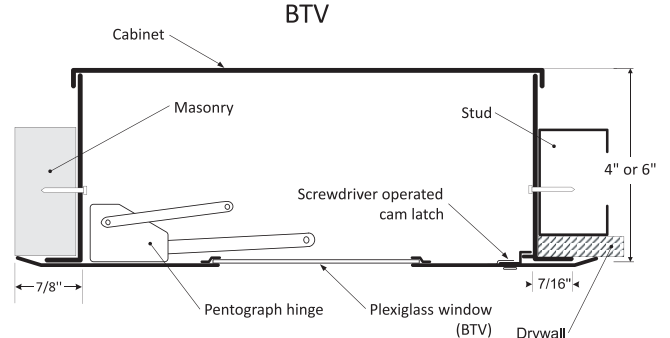
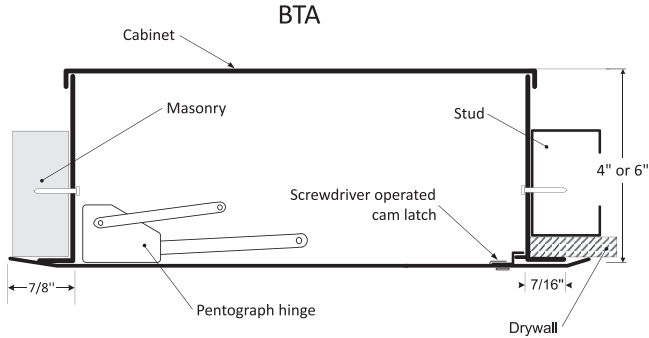


CABINETS / VALVE BOXES WITH HIDDEN FLANGE

BTA-BTV

INSTALLATION



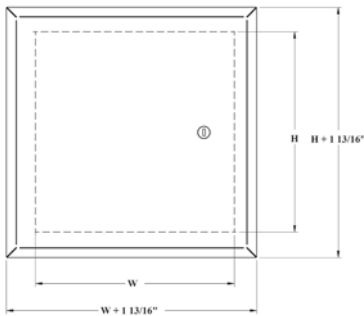
DIMENSIONS AND APPEARANCE

DOOR SIZE - W x H INCHES (MM)	WINDOW SIZE FOR BTV (approx.)	NUMBER OF LOCKS
8 1/4 x 8 1/4 (209 x 209)	3 x 3 (76 x 76)	1
12 x 12 (304 x 304)	5 x 5 (127 x 127)	1
16 x 16 (406 x 406)	8 x 8 (203 x 203)	1

Rough wall opening = door size + 1/2" or + 12.7mm

LEED ready: This product contributes to LEED® credits.

ACCESS DOORS MADE FAST!



BTA



BTV

DESCRIPTION AND MATERIAL SPECIFICATION

- Material:** 16 gauge cold rolled steel
- Hinge:** concealed, exclusive hinge design
- Lock / latch:** screwdriver operated cam latch
- Finish:** high quality white powder coat primer
- Packaging:** individually wrapped, 1 per box
- Depth:** 4" or 6"

POPULAR OPTIONS:

- Lock / latch:** cylinder lock and key, Allen head hex lock
- Material:** stainless steel 304 #4 (brushed finish)
- Window:** 1/8" Plexiglass (BTV only)
- Style:** surface mount cabinet (style AHD)
- Depth:** various depths available
- Unassembled:** door frame separate from cabinet

PROJECT DATA

PROJECT NAME:	MODEL	QTY	W	H	OPTIONS
ARCHITECT:					
DEALER:					
CONTRACTOR:					
LOCATION:	SPECIAL INSTRUCTIONS:				
DATE:					
TAGGING INSTRUCTIONS:	SUBMITTAL APPROVAL: (signature or stamp)				