

# HOLLOW METAL DOORS

Standard & Custom Engineered Doors

**HMD DOOR SERIES**

**MDI® HMD Series Doors are available as:**

<b>14 Gauge</b>	<b>Extra Heavy Duty</b>
<b>16 Gauge</b>	<b>Heavy Duty</b>
<b>18 Gauge</b>	<b>Medium-Heavy Duty</b>
<b>20 Gauge</b>	<b>Medium-Standard Duty</b>

**A Complete line of Doors, Frames & Hardware**



All of the Metropolitan HMD door series are available in a variety of sizes, gauges and elevations (Lites & louvers). MDI® offers one of the most comprehensive line-ups of HM door cores. We have standard, ready-to-ship products as well as the capability to custom engineer your doors to meet your specifications. Standard doors are available as 1 3/4" (45 mm) thick and are available in 14, 16, 18 and 20 gauge commercial quality (A40 galv.) steel and are reinforced to receive architectural hardware in accordance to ANSI A115 standards. Steel doors are also available in stainless steel, lead-lined (X-ray) and G90 galvanized. Bullet resistant, blast resistant and STC (acoustical) door & frame systems are available.

#### **General Specifications**

- Door faces are flush design and free of any joints, welds or seams.
- Vertical edges are interlocked with a mechanical seam and reinforced with a reinforced epoxy resin, high viscosity, thicksotropic sealant. Seamless edge is optional.
- Both door edges are beveled 1/8" (3mm).
- Hinge reinforcements are prepared for standard weight 4 1/2" x 4 1/2" (114 mm x 114 mm) hinges.
- Hinge reinforcements can easily be field converted to accommodate heavy weight hinges.

#### **Six Door Cores Available**

- Honeycomb (HMD-HC), Polystyrene insulated (HMD-PS), Polyurethane insulated (HMD-PU), Temperature Rise (HMD-TR).
- Steel stiffened doors are also available: Channel-shaped steel stiffened\* (HMD-S) & hat-shaped steel stiffened\* (HMD-MED).



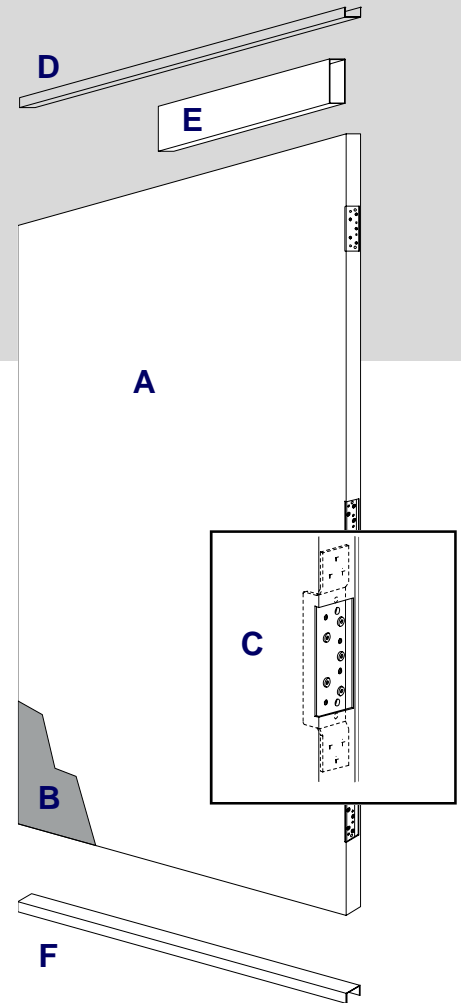
© 2007 Metropolitan Door Industries Corp.

© MDI and the MDI designed logo are Registered Trademarks of Metropolitan Door Industries Corp.

[www.metropolitandoor.com](http://www.metropolitandoor.com)

## ▶ MDI® Typical HMD Door Construction

- A. Door face sheets (A40 galv., stainless steel or G90 galvanized).
- B. Door core: Honeycomb, polystyrene, polyurethane or steel stiffened.
- C. 10 gauge high frequency dual purpose hinge reinforcement with return bend for added strength and rigidity. Hinge reinforcements can be easily field converted to accommodate heavy weight hinges. 7 gauge hinge reinforcements are optional.
- D. 18 gauge inverted top channel projection welded to the door skins and tack weld at each corner for added rigidity. Vinyl cap at top; or metal cap at top (flush and water-tight) are optional.
- E. 18 gauge door closer reinforcement—box style.
- F. 18 gauge inverted bottom channel projection welded to the door skins and tack weld at each corner for added rigidity. Metal cap at bottom (flush and water-tight) is optional.



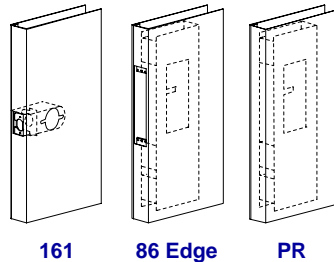
## ▶ Standard Lock Preps

**161:** Cylindrical lock reinforcement with added barrel support, projection welded to the door edge, in accordance with ANSI A115.2 requirements.

**86 Edge:** Mortise lock prep reinforcement box with incorporated lock support, in accordance with ANSI A115.1 requirements.

**PR:** Rim panic reinforcement for surface mounted exit device application.

Special lock preparations are available. Preps such as, card-key locks, surface vertical rods, concealed vertical rods and multi-point lock systems to name a few.



## ▶ Fire Labeling

Metropolitan fire labeled steel doors are approved by both Intertek Testing Services (ITS/Warnock Hersey) and Underwriters Laboratories (UL) Fire Labeling programs.\* Fire labeled steel doors must be installed with an equivalent fire labeled frame with approved fire listed hardware. Some restrictions do apply.



### Fire Labeling Guide for HMD doors by Metropolitan Door Industries

MAXIMUM DOOR OPENING SIZE		
Single: 4'-0" x 8'-0"		
Double Door: 8'-0" x 8'-0"		
MINIMUM GAUGE	RATING	ALLOWABLE GLASS AREA
20	3 Hours	N/A *
20	1 1/2 Hours	100 in. <sup>2</sup>
20	45 min.	1296 in. <sup>2</sup>

#### 🔥 FIRE LABELING NOTICE 🗑️

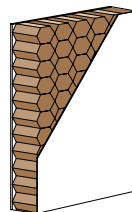
Openings shown above with glass in our Fire Labeling Guide are provisioned for 1/4" thick wire glass. Larger glass openings are available with the use of a fire listed glazing product that meets CPSC CAT II. Some restrictions do apply. Contact our customer service department for details. See pages 30-31 for more information.

\* Please note that with the use of a fire listed glazing product that meets CPSC CAT II Metropolitan can provide 3 hour fire rated doors with up to 100 in.<sup>2</sup> of glass.

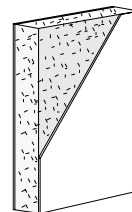
Metropolitan is committed to its customers to continuously improve the quality and performance of its products. As a result of this commitment, technical specifications are subject to change without notice.

## ▶ Door Cores

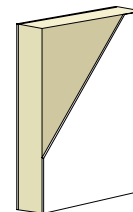
Contact our customer service department for core details and availability.



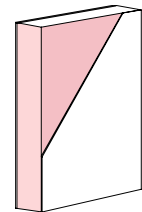
**Honeycomb  
HMD-HC**



**Polystyrene  
HMD-PS**



**Polyurethane  
HMD-PU**



**Temperature Rise\*  
HMD-TR**

\* HMD-TR is a temperature rise door designed to impede and limit heat transmission generated from a fire. The core's excellent heat retardant characteristic protects the unexposed area thus allowing ample time for safe evacuation. In accordance to temperature rise standards, the unexposed door surface will reach a maximum of 250°F during the first 30 minutes of a fire and 450°F after 60 minutes. Standard doors are 1 3/4 in. (45 mm) thick and are available in 16, 18, and 20 gauge (A40 galv.) steel.